

# Anti-mouse Trem1 mIgG2a Antibody

## Product Information

<b>Product Name</b>	Anti-mouse Trem1 mIgG2a Antibody
<b>Storage temp.</b>	Store at 2-8°C short term (1-2 weeks). Store at ≤ -20°C long term. Avoid repeated freeze-thaw.
<b>Catalog# / Size</b>	<b>GM-88412MAB-1mg / 1 mg</b> <b>GM-88412MAB-5mg / 5 mg</b> <b>GM-88412MAB-25mg / 5 mg*5 vials</b> <b>GM-88412MAB-50mg / 50 mg</b> <b>GM-88412MAB-100mg / 50 mg*2 vials</b>

## Antibody Information

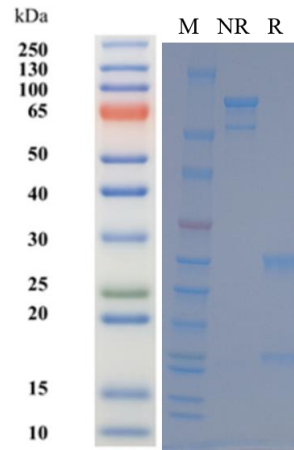
<b>Expression System</b>	CHO
<b>Aggregation</b>	< 5% as determined by SEC-HPLC
<b>Purity</b>	> 95% as determined by SDS-PAGE
<b>Endotoxin</b>	< 1 EU/mg, determined by LAL gel clotting assay
<b>Sterility</b>	0.22 μm Filtered
<b>Target</b>	Trem1
<b>Clone</b>	/
<b>Alternative Names</b>	Trem-1, CD354
<b>Source/Isotype</b>	Mouse IgG2a, Kappa
<b>Application</b>	Flow Cytometry
<b>Gene ID</b>	58217 (Mouse)
<b>Description</b>	Trem1 (Triggering Receptor Expressed on Myeloid cells 1) is a key amplifier of inflammatory responses and is overactivated in conditions such as sepsis, pneumonia, inflammatory bowel disease, and acute pancreatitis, contributing to cytokine storms and tissue damage. Anti-Trem1 antibodies or inhibitors can block this signaling pathway, thereby alleviating hyperinflammation and restoring immune homeostasis. Recent studies also suggest that targeting Trem1 may improve the tumor immune microenvironment and enhance anti-tumor immunity. Thus, anti-Trem1 not only offers a novel therapeutic strategy for inflammatory diseases but also opens new avenues for precision immunomodulation and biologic drug development. Its potential for clinical translation warrants further investigation.

**Formulation** Phosphate-buffered solution, pH 7.2-7.4.

Version:3.1

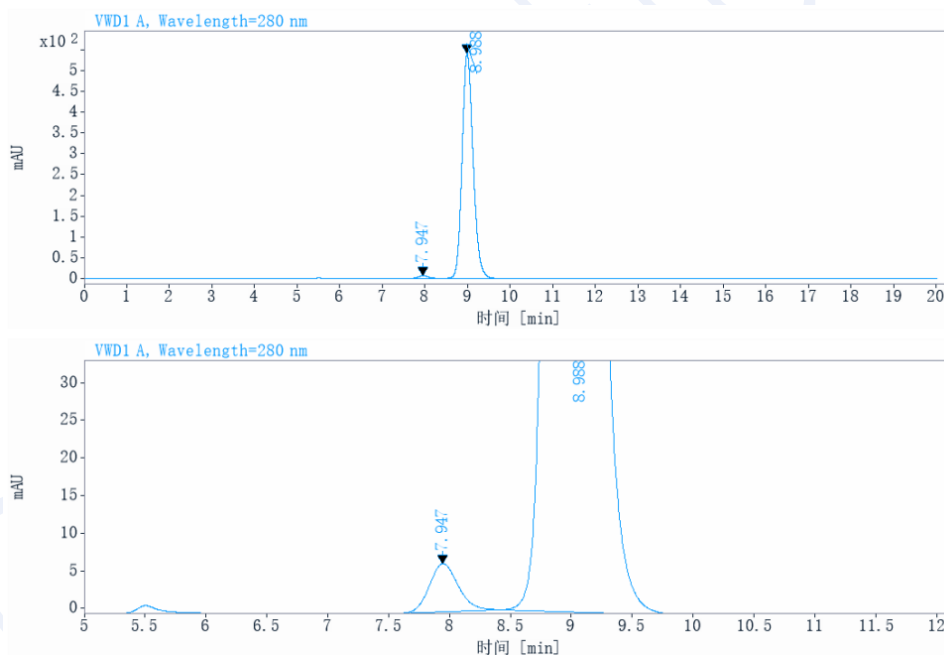
## Data Examples

### SDS-PAGE



On SDS-PAGE under reducing (R)/non-reducing(N-R) condition. The gel was stained overnight with Coomassie Blue. The purity of the protein is greater than 95%.

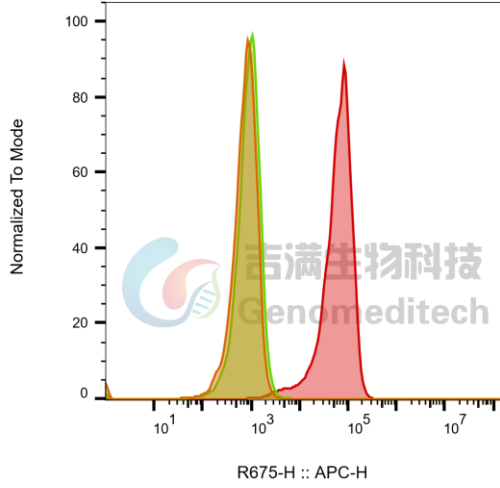
### SEC-HPLC



The purity of this product is more than 95% verified by SEC-HPLC

Flow Cytometry

Mouse\_TREM1 CHO-K1 Cell Line (Catalog # GM-C13368) was stained with Anti-mouse Trem1 mlgG2a Antibody (Catalog # GM-88412MAB) or isotype control antibody, followed by anti-Mouse IgG APC-conjugated Secondary Antibody.



SampleID	Geometric Mean : R675-H
CHO-K1 anti-M_Trem1+APC-2nd Ab	704
CHO-K1 M_Trem1 M_IgG+APC-2nd Ab	861
CHO-K1 M_Trem1 anti-M_Trem1+APC-2nd Ab	57157

Fig. FACS

Genomeditech